

METAL CRAFT

ID MADE BETTER®



The Metalcraft Advantage

ID Made Better®



PRODUCT CATALOG



Your expert and responsive partner providing customized identification solutions for your tracking needs, offering the best customer experience in the industry.

Daily we bring our deep product and technical knowledge to help customers solve their toughest tracking challenges. For over 70 years, we've offered the most durable, technology-agnostic solutions coupled with an unmatched breadth of materials and unparalleled support.

Think about this: products don't get out the door without the proper tag. Supply chains grind to a halt. Revenue is lost. There's no tracking or traceability. It's more than putting a label on a surface. It's knowing the conditions the label will be going through. It's knowing how RFID can deliver greater reliability and efficiency as hospitals or schools manage resources. It's giving customers the flexibility, ease of use, and technical solutions they need to meet ID demands not only today but into the future. It's what Metalcraft delivers every day: **ID Made Better.®**

- 2 Introduction
- 3 Our Capabilities
- 4 Universal RFID Product Line
- 5 RFID Tags Product Line
- 6-7 RFID Access Control Product Line
- 8 Non Barcode Metal Nameplates
- 9 Plastic Labels Product Line
- 10 Paint-Resistant Product Line
- 11 High Temperature/Extreme Conditions Product Line
- 12 Photo Anodized Product Line
- 12 Access Control – People Product Line
- 13 Security/Destructible/Specialty Labels
- 14 Warehouse/Distribution Center Product Line
- 15 Metalcraft 5-Point Promise

Capabilities

Here are just a few of our capabilities.
For even more, go to our website: idplate.com.

Qualification Process

Metalcraft **DART** Qualification is the project discovery process we use at Metalcraft to ensure the right tag for the right application. This in-depth process makes sure every detail is captured and correct for the label project. Our ID Specialists help customers Define the Objective, Ask Questions, Recommend Products, and Test Samples to get it right the first time. Remember – *We qualify, so you don't have to reapply!*



Match Technology to the Application

We are Technology Agnostic! Serial numbers, barcode, or RFID – whatever your application requires-- Metalcraft has you covered! Don't know which technology to use? No problem – we can help walk you through the DART Qualification Process and help you find the right product and the right technology for your application.

Data Management and Security

Numbers are our business and have been since 1950. We understand the value of the number and what it represents. We track our customers' number history to make it easier for them to focus on more pressing matters than what number to start with when placing an order.

Our Serialization Engine tracks serial number history for customers and prevents duplication within the job, part, or even customer level overall – making it even easier for the customer to manage. Never again will a customer have to worry about where they left off or duplicating any of their previous serial numbers.

RFID Programming



Metalcraft's RFID programming capabilities for UHF and HF are nearly endless. From simple, matching the bar code printed on the tag to the RFID information programmed to the tag to complex, delivering customer-defined proprietary programming, no other company has the RFID programming capabilities Metalcraft does – guaranteed.

Metalcraft's RFID expertise goes beyond the programming to value-added services like providing an electronic association file for every order we produce.

Converting Capabilities



We lead the label converting industry because of our quality and investments in state-of-the-art converting technology. With our converting methods, we can design, construct and cut almost any label to fit your application need. With that investment in more robust and updated technology and converting

equipment, we guarantee shorter lead times on orders and produce a higher quality product than most competitors.

Our RFID converting equipment can run millions of tags just as efficiently as running a single prototype order. In other words, no order is too big or too small. In addition, our ability to work with multiple inlay manufacturers or produce our own inlays allows for even more flexibility with different applications. Metalcraft primarily converts HF (13.56 MHz ISO/IEC 15693 and ISO/IEC 18000-3) and UHF (915 MHz Gen 1 and Gen 2) inlays.

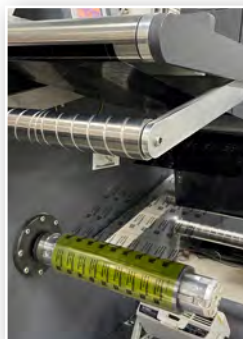
Materials and Adhesives



We use the toughest, most durable products on the market. Made with long-lasting materials including rigid or flexible aluminum, rugged stainless steel, and a wide range of polymer materials, including polyester, polycarbonate, and polypropylene.

Different surfaces, conditions, and even temperatures can affect the type and thickness of adhesive needed to ensure your labels stay attached. We match the right adhesive to your application, so you know once your tags are applied, they will remain in place as planned.

Print Capabilities



Metalcraft provides the broadest range of print and color options in the industry. We can accommodate any layout, logo, or color match your branding. Sub-surface printing and photo imaging ensure the text and barcodes are protected from surface wear.

- Digital
- Flexographic
- Laser Engraving
- Photo Composed
- Screen Printing
- Thermal Transfer



Metalcraft's Universal RFID Tag product line is the closest thing to a one-size-fits-all RFID solution. This revolutionary product line features surface-independent tags with a patented inlay design that delivers excellent read ranges regardless of the surface – metal, plastic, even wood. Custom programming matches the printed barcode information on the label to give you the option of using both tracking technologies.

Applications

- Asset Tracking
- Work-in-Process
- Tool Tracking



Universal RFID Asset Tag

The Universal Max RFID Tag is the one that started it all! This high performing tag boasts a 25+ ft read range on metal with a footprint of 2.875" x 1.375".



Universal RFID Hard Tag

Designed for a rougher environment, the Universal RFID Hard Tag features a modified Universal RFID Max inlay encased in an impact-resistant, ultrasonically welded polycarbonate housing.



EU Universal RFID Asset Tag

The EU Universal Max RFID Tag is another version of the Universal Max RFID Tag that is optimized at 868 MHz for use in the ETSI band.



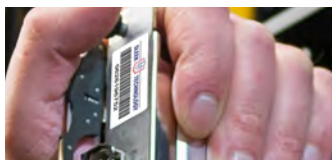
Universal Mini RFID Tag

The Universal Mini RFID Tag takes what customers love about the Universal Max RFID Tag and made it smaller (2.75" x .75") with a thinner profile while still achieving a 15 ft. read range on metal.



Onsite Printable Universal Mini RFID Tag

The Onsite Printable Universal Mini RFID Tag is thermal transfer receptive and can be ready to ship in just one day!



Universal MC RFID Tag

The Universal MC RFID Tag features the same low profile as the Universal Mini RFID Tag, but in a 2.05" x 1" footprint and allows for onsite printing.



Universal Micro RFID Tag

As its name implies the Universal RFID Micro Tag is the smallest in the Universal RFID product family at 1.875" x .625" while boasting a 9 ft read range on metal.



EU Universal Mini RFID Tag

Just like its FCC counterpart, the EU Universal Mini RFID Tag has a smaller profile while still achieving an excellent read range on metal in the ETSI band.



Applications

- Asset Tracking
- Work-in-Process
- Tool Tracking

Metalcraft's RFID tags offer the greatest durability, accuracy and reliability in the industry, managing resources in hospitals, schools, military, information technology, shipping and much more. Our tags stick around for the long haul, and after seeing their enhanced functionality and reliability, you'll find that our solutions do too.



Standard RFID Tag

Made of flexible polyester material, the Standard RFID Tag is ideal for a variety of different asset tracking applications on non-metal surfaces achieving a 18-20 ft* read range.



DuraDestruct RFID Tag

The DuraDestruct RFID Tag features a patented inlay design and is another great solution for tracking applications with the added benefit of a tamper-proof feature. Read range up to 40 ft* on plastic.



RFID Server Rack Tag

The RFID Server Rack Tag works well with IT assets (such as server racks) where metal surfaces and space limitations are issues.



Stick-n-Staple RFID Tag

The Stick-n-Staple RFID Tag is an economic option for wooden assets that allow for staples to be used.



RFID Hang Tag

The RFID Hang Tag is ideal for asset tracking on metal or non-metal surfaces that do not allow for attachment directly to the asset. It is removable and reusable creating a higher ROI.



RFID Bale Tag

The RFID Bale Tag is a hanging tag that features a metal grommet for added durability. It is removable and reusable creating a higher ROI.



RFID Flex Hard Tag

The semi-rigid polyester construction of the RFID Flex Hard Tag provides increased durability and strength. It can be attached with either adhesive or mechanical fasteners making it a great alternative to pricier hard tags.



Looking for a completely automated way to allow access to a specific location? Metalcraft's Access Control RFID Product Line offers customers a more accurate and secure way to control access in and out of a variety of locations. Using both UHF and HF RFID technologies, we've developed an entire suite of products to track who or what is coming and going.

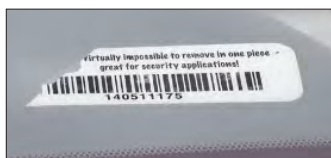
Applications

- Access Control
- Event Management



RFID Windshield Tag

The RFID Windshield Tag reads both on and through windshield glass while double-sided registered printing offers customers the ability to see the numbers from any angle. High frequency (HF) options available.



Destructible RFID Windshield Tag

Just like its non-destructible counterpart, the Destructible RFID Windshield Tag reads both on and through windshield glass. In addition, the tag is designed to destruct upon removal attempt from the windshield.



Onsite Printable RFID Windshield Tag

The Onsite Printable RFID Windshield Tag is ideal for applications where a preprinted tag is not feasible. The thermal transfer receptive material ensures a crisp, clear image while the EZ-Peel adhesive leaves no residue behind.



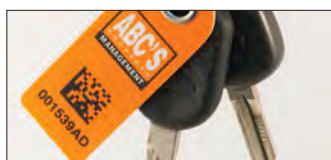
DuraDestruct RFID Windshield Tag

This patented product design deters transferability from one vehicle to another as the tag is rendered useless upon removal from windshield. Read range is up to 40 ft on glass.



Rearview Mirror RFID Hang Tag

Perfect for temporary access control applications, the RFID Parking Permit Hang Tag is an optimal choice for access control in parking lots, gated communities and anywhere vehicles come and go. Features double-sided printing option.



RFID Key Fob

The RFID Key Fob is an ideal identification solution for personnel and/or access control applications where the tag can be secured to a key chain, etc.



For access control application involving people, Metalcraft offers a variety of different products. Every one of these products feature different RFID technology options – including NFC (near-field communications) to facilitate contactless payments.

Applications

- Access Control
- Event Management



RFID Credential Tags

Produced with a digital printing process that provides photographic like image quality of detailed logos or special designs, Metalcraft's RFID Credential Tags and Name Badges are the perfect solution for events such as festivals and concerts when you want your image to leave a lasting impression.



RFID Wristbands

If you're handling a concert or other event with lines of people awaiting access, use RFID wristbands to quickly and efficiently manage crowd entry. The wristbands feature an RFID inlay to grant access with ease.



RFID Key Fob

The RFID Key Fob is an ideal identification solution for personnel and/or access control applications where the tag can be secured to a key chain, etc.



RFID Race Timing Tags

Metalcraft's RFID Race Timing Tag is a low-profile RFID tag that easily adheres to race bibs and has great performance and sensitivity to track runners splits and times throughout the race. Each RFID label is customizable with your text and logo.

Non-Barcode Metal Nameplates



Metalcraft's Non-Barcode Metal Nameplates work just as good as they look – and they look great! Add company logos, trademarks, stylized or block type to really make a statement!

Applications

- Asset Tracking
- Work-in-Process
- Product Identification



Signature™ Printed Nameplates

Printed using digital inkjet technology and four-color processing, these .016" thick aluminum nameplates offer the greatest flexibility in nameplate design.



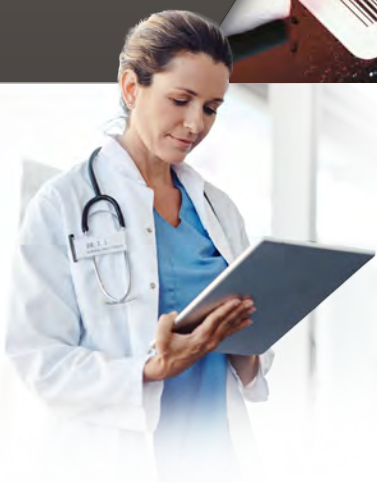
Embossed Nameplates

Embossed Nameplates combine durability with one of the most impressive design features we offer, making your company logo stand out – literally! Add your logo, trademarks, stylized or block type, as well as one or two colors with standard or custom options.



Stainless Steel Nameplates

Stainless Steel Nameplates are etched and color-filled to deliver durability and easy readability. Available with logos, stylized type and other designs in your choice of 5 standard colors.



Applications

- Asset Tracking
- Work-in-Process
- Tool Tracking
- Product Identification

Our plastic label line is the perfect combination of durability and design. Flexible yet functional polyester, polycarbonate and polypropylene labels easily conform to curved and uneven surfaces making them the ideal solution for a variety of different applications in a wide range of industries.



Premium STYLEMARK Barcode Labels

Made from a flexible polycarbonate material with a textured, non-reflective finish that is extremely abrasion resistant, Premium STYLEMARK Labels look great and work even better.



CRAFTMARK Barcode Labels

Printed using our thickest polyester and a .0035" thick adhesive CRAFTMARK Barcode Labels can outperform any standard polyester label – and with an unlimited color palette they will look better doing it.



Metalized Polyester Barcode Labels

Metalized Silver Polyester Labels are polyester asset labels that have the appearance of expensive metal without the accompanying price tag. These silver polyester labels are digitally printed which allows for crisp, clean company logos as well as consistent, reliable barcode scans.



Premium Polyester Barcode Labels

The workhorse of Metalcraft's Plastic Label Line, our Premium Polyester Barcode Labels provide the flexibility and functionality you need in a basic polyester barcode label.



VALUMARK Barcode Labels

An ideal solution for indoor asset tracking, "VALUMARK" Labels are an effective affordable identification solution.



ID Advantage Barcode Labels

Gain the advantage for your asset tracking solution with Metalcraft's ID Advantage Barcode Labels.



48-hr DASH Program

Need a quick turnaround time for your labels? Metalcraft's DASH Program provides a flat-fee rush order service that offers a wide variety of polyester and polymer products to fill any application need.

Customize any label with a variety of options and sizes including styles, logos, colors or text. Include serial numbers and/or barcode at no additional charge! Once the order is placed, we will have your labels DASHed into your hands within 48 hours.



Do you have an application that involves exposure to paint? We've got you covered. Our paint-resistant line of products cover everything from a one-time paint job to an application that must withstand repeated paint exposure.

Applications

- Asset Tracking
- Work-in-Process
- Product Identification



Removable Paint-Mask Barcode Labels

Our Removable Paint-Mask Barcode Labels have a unique one-time removable paint-mask designed to resist tough manufacturing environments and can withstand temperatures up to 250°F.



Permanent Paint-Mask Barcode Labels

Tired of having to reapply a barcode label after every paint job? Regular barcode labels will not stand up to repeat paint applications, but our Permanent Paint-Mask Barcode labels will thanks to their fluoropolymer laminate.



Paint-Resist Metal Barcode Labels

Need an economical nameplate that can withstand multiple paint applications while sporting a color logo or design? Our Paint-Resist Metal Barcode Nameplates are the solution you have been looking for. These nameplates feature the same fluoropolymer laminate as their label counterpart.



Teflon® Coated Metal Barcode Nameplates

Dirt, grease, grime, even dried paint easily come off this revolutionary nameplate due to its durable Teflon® coating. Once clean, you get a fast, accurate barcode reading to track assets, fugitive emissions or work-in-process.

High Temperature/ Extreme Conditions

For extreme environments, only the strongest will do. That's when you call in Metalcraft's line of high temperature/extreme conditions product. They withstand exposure to harsh chemicals and ultra-high temperatures up to 1800 °F.

Applications

- Asset Tracking
- Work-in-Process
- Product Identification



Laser-Engraved Ceramic-on-Stainless Steel

Printed using ceramic ink on a thin ceramic layer that is fired and fused to a heat-resistant stainless steel substrate. Withstands moderate to harsh chemical conditions and extremely high temperatures.



Etched and Filled Stainless Steel Nameplate

Available with logos, stylized type and other designs in your choice of five standard colors, these durable stainless-steel nameplates provide excellent chemical resistance and are ideal for high-temperature washing processes and high-density alkaline solutions.



Ceramic Barcode Labels

An unfired ceramic label that is fused onto the product during the heat treatment process of the production line. When fused onto glass, metal or ceramic, it resists extreme heat and chemicals.



High-Temp Metal Barcode Nameplates

Made of durable anodized aluminum, Metalcraft's High Temperature Metal Barcode Nameplates are ideal for applications with temperature requirements from 900°F – 1200°F.



Durable enough for the production floor, yet versatile enough for an office setting, Metalcraft customers have come to expect the very best and our Photo Anodized Metal Nameplates and Foil Labels deliver every time. At the foundation of this best-selling product line is the photographically reproduced black copy, logos and barcodes which are then sealed within the anodic layer of aluminum – ensuring accurate and reliable reads for years to come.

Applications

- Asset Tracking
- Work-in-Process
- Tool Tracking
- Product Identification



Metal Barcode Nameplates

Available with or without a barcode, Metal Barcode Tags are ideal for customers who require permanent nameplates to stand up to harsh environments including chemicals, abrasion and high temperatures.



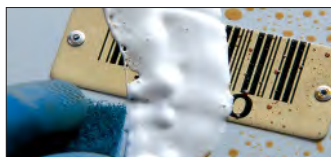
Tabbed Metal Barcode Nameplates

Metalcraft's Tabbed Metal Barcode Nameplates provide an easy way to apply this best-selling product with a convenient break-away tab to assist with liner removal. At no additional charge, there's literally no reason not to try this product and once you do, you'll be hooked—guaranteed!



Foil Barcode Labels

Metalcraft's Foil Barcode Labels are ideal for customers who require a flexible label that will conform to most surfaces yet withstand harsh conditions including chemicals, abrasion, solvents, and high temperatures.



Teflon® Coated Metal Barcode Nameplates

Dirt, grease, grime, even dried paint easily come off this revolutionary nameplate due to its durable Teflon® coating.



Paint-Resist Metal Barcode Nameplates

Metalcraft's Paint-Resist Metal Barcode Nameplates feature a fluoropolymer laminate that resists multiple paint applications (approximately 10-12), grease, even graffiti, can withstand temperatures up to 350°F.



Round Metal Tags

Metalcraft's Foil 2D Dot is an ideal identification solution for small parts tracking - specializing in extreme conditions where abrasion and high temperatures may be an issue.

Security/Destructible/ Specialty



Metalcraft's customization capabilities often lead to new product opportunities based on customer needs. What was once a custom solution for a specific customer is now a new product for everyone. Our Security/Specialty Labels Product Line is a perfect example of this.

Applications

- Asset Tracking
- Warranty Control
- Security/
Anti-theft



Tamper-Evident Barcode Labels

Discourage theft and keep your property intact with Metalcraft's Tamper-Evident Barcode Labels. If someone attempts to remove the label, the word "VOID" is left behind on the surface of the asset and the back of the label.



Destructible Barcode Labels

Made from a destructible material that tears apart if someone tries to remove it, Metalcraft's Destructible Barcode Labels offer customers a unique way to protect their property.



EZ Peel Removable Barcode Labels

Metalcraft's EZ-Peel Removable Labels feature a special adhesive which allows the user to remove or reposition the polyester barcode label without leaving a sticky residue.



Barcode Cable Labels

Metalcraft's Barcode Cable Labels simplify the task of marking cables, hoses, tubing, etc., by providing subsurface printing on one end with the clear part of the label wrapping around the pre-imaged information to provide additional protection.



Barcode Hang Tags

A removable, reusable solution for a variety of applications, Metalcraft's Barcode Hang Tag may be used for cold storage, asset control, personnel identification, logistics, work-in-progress, warehousing applications and more.



Thermalmark Thermal Transfer Printable Labels

Metalcraft's Thermalmark Polyester Labels offer the durability of a pre-printed label with the flexibility to custom print information on-site as needed.

Warehouse/ Distribution Center



Whether your asset is sitting in a storage facility or actively in transit, it has to be properly tagged so that you can keep track of it. Large shipping containers, pallets and individual packages can all use asset tags so that your inventory management is not compromised by harsh handling conditions.

Applications

- Asset Tracking
- Work-in-Process
- Tool Tracking
- Product Identification



Long-Range Barcode Labels (with Placard)

Made of retroreflective vinyl material with a slit liner and adhered to a high-impact polystyrene placard, Metalcraft's Long Range Barcode Labels are an ideal solution for any warehouse and/or distribution center.



Pallet Barcode Labels

Ensure that pallets heading out will come back by tracking them with our Pallet Barcode Tags. Or use them to track products on the pallets. These long-wearing nameplates feature a special adhesive designed for today's polypropylene pallets. You can also affix your nameplates, ordered with optional holes, using rivets.



Warehouse Rack Labels

Metalcraft's Warehouse Rack Labels keep your dynamic warehouse environment organized and efficient by helping with storage configuration challenges - making it possible to accommodate numerous products on the move.



Polyester Container Labels

Ensure proper tracking and return of your reusable containers with a product specifically designed for that application.

5 POINT PROMISE

1

Superior Durability

Metalcraft's popular Photo Anodized Metal Tags and Foil Labels combine limitless options, with dependability and readability under harsh conditions for the most durable ID solutions.

2

Next Day Program

Order today. Ship tomorrow at no additional charge! Available in a variety of our most popular sizes of Photo Anodized Metal Tags and Foil Labels (domestic only, black only).

3

Easy Replacements

Why pay for an entire order when you only need a few replacements? Metalcraft now offers this service for one low flat fee.

4

Number History

Can't remember where your number sequence ended? We do! Metalcraft offers instant number recall to pick up exactly where your last order left off.

5

The Metalcraft Guarantee

Add the Intensified option to any Photo Anodized product, and we guarantee the barcode will be readable for the life of the asset or we will replace it at no charge!

Anodic Layer

The glass-clear, sapphire-hard anodized layer resists chemicals, abrasions and dirt.

Sealed Image

Black graphics are metallic silver particles that hold up to harsh environmental conditions.

Aluminum Layer

The aluminum base will not peel, crack or delaminate.





Metalcraft continues to innovate, adding solutions to our portfolio that adds competitive value for our customers.



Grey Trunk RFID is the asset tracking software product developed by ARK Business Systems, a subsidiary of Metalcraft, Inc.

Developed by the RFID experts at Metalcraft, Grey Trunk RFID is a recent addition to the Metalcraft brand. Working with RFID customers like you since the early 2000s, Metalcraft listened to your needs and broke down the barriers to effectively using RFID technology. With Grey Trunk RFID, you can expect an economical and easy way to deploy a complete RFID system that will help you save time and money.



Inlay Innovation is our new brand that offers custom inlay design and manufacturing using state-of-the-art equipment and processes. It continues our deep history of technological advancements in bringing high-tech manufacturing innovation to Iowa, USA.

Drawing on our over 15 years of RFID experience and expertise, Metalcraft's Inlay Innovation engineers create high-impact RFID solutions specifically targeted to each customer's unique application needs by intensely listening, learning, and creating that ideal solution together. We partner with customers to supply consistent, highest quality, highest performing, customizable inlay designs. Our partnership continues as we develop custom inlay solutions together.

800.437.5283

641.423.9460

IDPLATE.COM